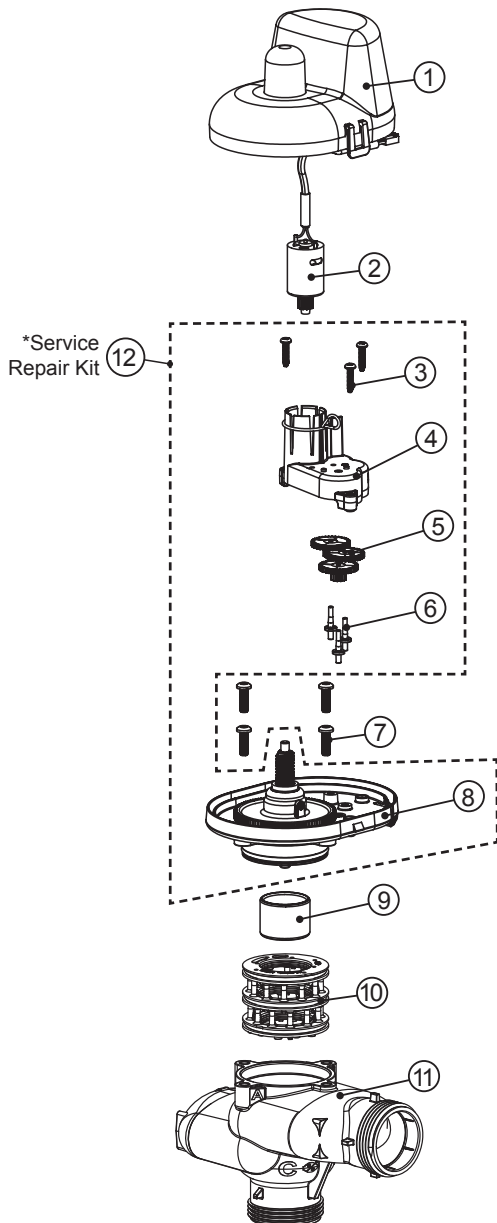
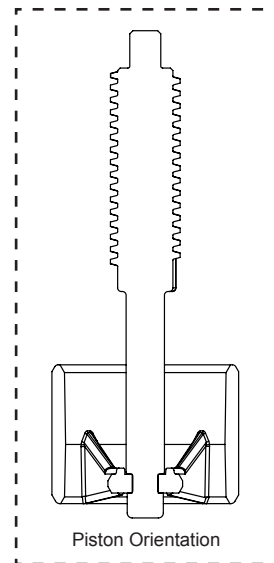


ORDER NO. V3035 • DESCRIPTION: WS1.5P NO HARD WATER BYPASS

Drawing No.	Order No.	Description	Quantity
1	V3073	MAV/NOHWBY COVER ASY	1
2	V3476	WS MOTOR ASY 8 FT	1
3	V3592	SCREW #8-1 PHPN T-25 SS	3
4	V3262-01	WS REDUCTION GEAR COVER ASY	1
5	V3110-01	WS1 DRIVE REDUCING GEAR PLAIN	3
6	V3264	WS2 BYPASS REDUCTION GEAR AXLE	3
7	V3527	SCREW 1/4-20 X 3/4 BHSCS SS (5/32" HEX ALLEN WRENCH REQUIRED)	4
8	V3072	MAV/NOHWBY 1/125/15 DRIVE ASY	1
9	V3506-01	MAV/NOHRD 1/125/15 PISTON	1
10	V3074	MAV 1/125/15 STACK ASY	1
11	V4380	WS15P NHWB BY BONDED BODY	1
Not Shown	V3805	STRAIN RELIEF COVER KIT	1
*12	V3042	WS1/1.25/1.5 MAV & NHWB SERVICE PACK	



•Operating Pressures:
 20 PSI Minimum / 125 PSI Maximum
•Operating Temperatures:
 40°F Minimum / 110°F Maximum



Certified to NSF/ANSI/CAN 61 and NSF/ANSI 372.

ORDER NO. V3035 • DESCRIPTION: WS1.5P NO HARD WATER BYPASS

HYDROCARBONS SUCH AS VASELINE®, PETROLEUM JELLY, KEROSENE, BENZENE, GASOLINE, ETC., WILL DAMAGE PRODUCTS THAT CONTAIN O-RINGS OR PLASTIC COMPONENTS. EXPOSURE TO SUCH HYDROCARBONS MAY CAUSE THE PRODUCTS TO LEAK. DO NOT USE CLACK CONTROL VALVE PRODUCT(S) ON WATER SUPPLIES THAT CONTAIN HYDROCARBONS SUCH AS KEROSENE, BENZENE, GASOLINE, ETC.

OPERATING PRESSURES: 20 PSI MINIMUM / 125 PSI MAXIMUM
OPERATING TEMPERATURES: 40°F MINIMUM / 110°F MAXIMUM

INSTALLATION/SERVICE:

Stack assembly should be installed with smooth side facing up toward the drive cap assembly.

Piston should be installed open end up. (See exploded view on back page).

When installing the motor, compress and hold the spring clip, insert the motor gently meshing the gears together. Once motor is fully installed release the spring clip, then rotate the motor so that it engages with the motor retainer.

* Note - If motor gear does not mesh with the reduction gear gently pull back on motor, rotate slightly and reinstall.

If the control valve manual does not include instructions for setting up the software for No Hard Water Bypasses (NHWB) please contact your local equipment supplier for current copies of the instructions.

No Hard Water Bypass:

The NHWB will be driven closed before the first regeneration cycle that is not FILL, SOFTENING or FILTERING, and be driven open after the last regeneration cycle that is not FILL. If the control valve enters into an error state during regeneration mode, the NHWB will remain in its current state until the error is corrected and reset.

Caution:

No Hard Water Bypass installation prevents water from entering the downstream plumbing. If a downstream plumbing device or local code requires an uninterrupted water supply, design the installation to accommodate.

